



S115

VACUUM CLEANER



Instruction manual

Safety Instructions

Please read these safety instructions carefully before use and keep them for future reference.

Intended Use

- Use this vacuum cleaner only in domestic households and in similar environments.
- This vacuum cleaner is not intended for outdoor use.
- Use only for dust and dry materials. Never vacuum people or animals with the electric power nozzle. Any other usage, modifications or changes are not permitted.
- This appliance can be used by children aged 8 or over and persons with reduced physical, sensory or mental capabilities or lack of experience and knowledge if they are supervised when using or have received instructions for using the machine safely and understand the possible dangers.
- Children should not play with this device. The cleaning and maintenance must not be carried out by children unless supervised by an adult.

Technical Safety

- Operate the unit only in accordance with this manual.
- Check before operating whether the voltage indicated on the bottom of the device matches the local mains voltage.
- Do not use the machine if it is damaged. Ensure that any damaged parts are only replaced by authorised Lux Service personnel.
- Do not use the power cable to carry the vacuum cleaner and do not pull on the cable to disconnect it from the electricity supply.
- Before cleaning the unit or changing the filters always switch off the vacuum cleaner and pull the plug out of the socket.
- Never pull the plug out by the cable.
- Do not immerse the machine in water and only use a dry or slightly damp cloth to clean the motor brush.
- The electric hose contains electrical connections:
 - do not use to vacuum water;
 - do not immerse it in water for cleaning;

- the hose should be checked regularly and must not be used if damaged.

- If the supply cord is damaged, it must be replaced by a Lux service qualified person in order to avoid any hazard.

Correct Use

- Do not use the vacuum cleaner without a dust bag, HEPA H13 filter and long-term HEPA filter.
- The vacuum cleaner lid cannot be closed if the dust back is missing. Do not apply excessive force.
- Do not use for hot or burning materials such as cigarettes or ashes.
- Do not use on liquids and damp materials.
- Do not use on easily flammable or explosive materials or gases.

Optional Accessories with rotating brushes

- Be careful that hair, fingers, clothing and the like never come in contact with the rotating roller of the electric power cleaning head.
- Never touch the brush roller while the vacuum cleaner is connected to the mains.
- Never push the electric power cleaning head over the mains supply cable as the cable could be damaged.

Warranty Note

- *The warranty and extended warranties are only valid if Lux ORIGINAL spare parts, accessories and consumables are used.*
- *Repairs during the warranty period must be performed by authorized Lux Service personnel.*
- *Water damage to the motor is not covered by the warranty.*
- *Do not use the dust container and filter more than once as this may lead to clogged pores that can damage the unit.*
- *The extended warranty (according to statutory liability) only applies if the dust container and filters are replaced by Lux ORIGINAL consumables within a reasonable time once shown on the LCD display.*



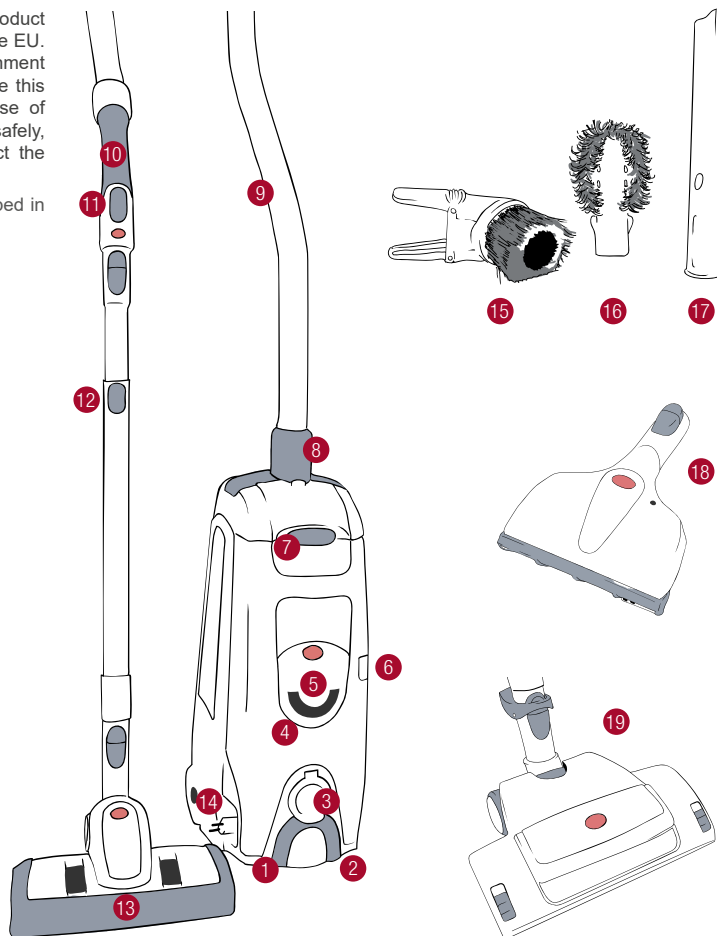
This symbol on the product or packaging indicates that this product must not be disposed of with normal household waste within the EU. In order to avoid possible negative consequences for the environment and health caused by improper waste disposal, please recycle this product responsibly in order to support the sustainable reuse of materials used in the construction. To return your used product safely, please use a designated recycling collection point or contact the dealer from whom the product was purchased.

The manufacturer reserves the right to make changes to the product described in this manual at any time without prior notice.

Overview

- 1 On / Off Switch
- 2 PPedal for Cable Winder
- 3 PBlow Port
- 4 POperation Buttons
- 5 PDisplay
- 6 PSide Park Position
- 7 Front Cover
- 8 Hose Connector with shutter
- 9 Electric Hose
- 10 Handle
- 11 Operating Handle on Hose
- 12 Telescopic Tube
- 13 Automatic-Floor Nozzle
- 14 Power Cable
- 15 Small Combi-Nozzle
- 16 Radiator Brush*
- 17 Crevice Nozzle*
- 18 PL 1 Upholstery Motor Brush*
- 19 PB Intelligence Motor Brush*

*Optional accessories in some countries



Filtration System

Synthetic Dust Bag

The highly efficient, 3-ply dust bag traps effectively dust particles and with its double-membrane system ensures that they are not released, even when the dust bag is changed.

Swiss HEPA™ Filter

The Swiss HEPA H13 Filter is a highly efficient filter capable of removing up to 99.97% of micro particles, such as fine dust, pollen and mould spores.

Active Carbon Filter

The activated carbon filter reduces gases and odours of natural and chemical origin.

HEPA Long-Term Filter

A second HEPA filter guarantees the removal of motor dust. The anti-bacterial coating additionally reduces bacteria and germs.

First Steps

Before Use

Ensure that the vacuum cleaner dust bag and filters are correctly installed.

Connect the hose connector and desired accessories.

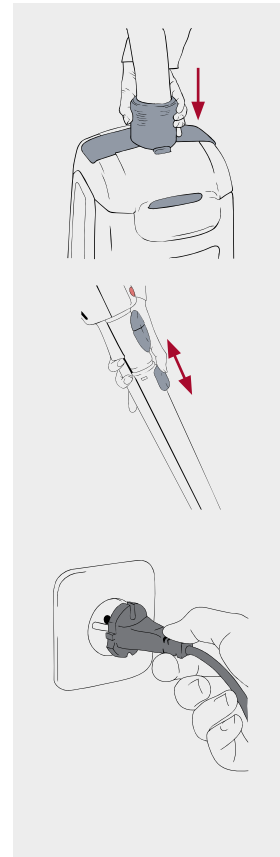
To extend the telescopic tube, push the slide downwards. To shorten the pipe, push the slide upwards.

Pull out the power cable completely and plug it into the electricity supply.

After Use

Turn the unit off, unplug the power cable and press the foot pedal for the cable winder to rewind the cord.

Please ensure your Lux S115 is kept in a dry and cool environment.



Operation on the Device



On / Off Switch

To turn the vacuum cleaner on and off.



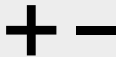
Cable Winder

To rewind the cable.



IPC-Mode

Your Lux S115 operates in the „Intelligent Power Control“ mode and automatically adjusts the suction power to the floor type.



Manual Suction Regulation

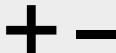
You can increase or reduce the suction power manually by using these buttons.

on the Handle



IPC Mode + On / Off Switch

Your Lux S115 operates in the „Intelligent Power Control“ mode and automatically adjusts the suction power to the floor type. Also to turn the vacuum cleaner on and off.



Manual Suction Regulation

You can increase or reduce the suction power manually by using these buttons. To return to the IPC Mode, press the IPC button.



Motor Brush On / Off

You can turn the motor brush on and off by using this button.

Display and Functions



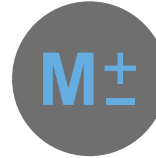
IPC-Mode

Your Lux S115 operates in the „Intelligent Power Control“ mode and automatically adjusts the suction power to the floor type.



IPC Mode + Motor Brush

Your Lux S115 operates in the „Intelligent Power Control“ mode and the connected motor brush is switched on.



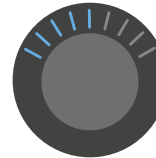
Manual Suction Regulation

Your Lux S115 operates in the manual mode. You can regulate the suction power using the “+” and “-” buttons.



Manual Mode + Motor Brush

Your Lux S115 operates in the manual mode and the connected motor brush is switched on.



Suction Power Display

The LED bars indicate the suction power of your Lux S115.



Dust Bag Full

Your Lux S115 MediClean dust bag is full and must be replaced.



HEPA Filter

Your Lux S115 HEPA Filter needs replacing.



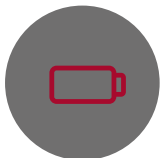
Stand by Function

The nozzle of your Lux S115 is in the parking position. If the interval is longer than 5 minutes, the LUX S115 automatically switches itself off.



Weak Handle Battery

The battery of your handle is weak and should be replaced soon.



Empty Handle Battery

The battery of your handle is empty and needs to be replaced.



HEPA Filter

Your Lux S115 HEPA filter is not fitted correctly.



Overheated

Motor is overheated.
Leave to cool down for up to 40 minutes.

Accessories and Additional functions

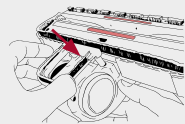


Automatic Floor Nozzle

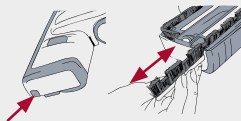
To clean floors, use the automatic floor nozzle in the IPC function. The nozzle automatically tailors itself to the type of floor by raising and lowering the brush.



You can manually adjust the hard floor or carpet function using the slides on the nozzle. Always use both slides simultaneously when adjusting the functions.



You can use the optional floor attachment for hard floors.

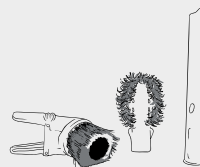


The front brush strip can be changed if necessary. Remove the cap and pull the strip out of the nozzle. Ensure that the cap is fitted correctly again.



Side Park Position

In the side parking position the S115 goes to standby mode. If the interval is longer than 5 minutes, the Lux S115 will automatically switch itself off.

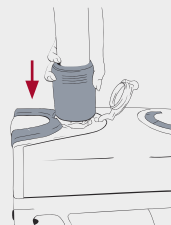


Combi Nozzle

For dusting, use the combi nozzle brush. For vacuuming upholstery, use the suction part of the combi nozzle. For vacuuming curtains, reduce the suction power manually. The combi nozzle can be kept ready to hand on the bracket on the hose handle.

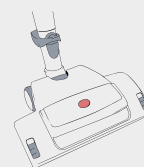
Crevice Nozzle and Radiator Brush*

Use the crevice tool for cleaning narrow spaces and corners. To use the radiator brush, put it on to the crevice tool.



Blow Port - Airflow Function

Open the flap of the blow port and plug the hose into the socket (air inlet open). When the vacuum cleaner is turned on, air is blown from the tube.



PB Intelligence - Motor Brush*

Your powerful helper for deep cleaning and carpet cleaning. For proper deep cleaning of your carpets we recommend to use the PB Intelligence.



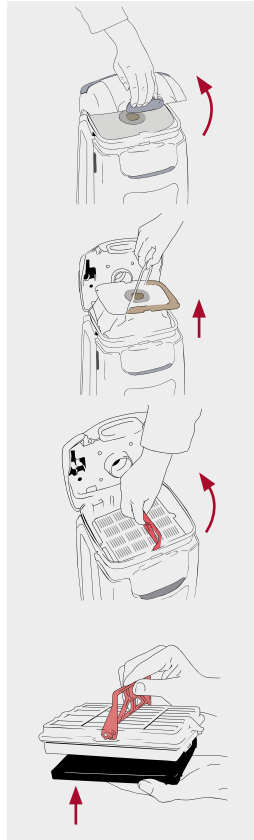
PL 1 - Upholstery Brush*

For the deep cleaning of your upholstered furniture and mattresses. For proper deep cleaning of upholstery and mattresses we recommend to use the PL1.

*Optional accessories in some countries

Maintenance & Filter Change

Only use Lux ORIGINAL spare parts, accessories and consumables.



Opening the Device

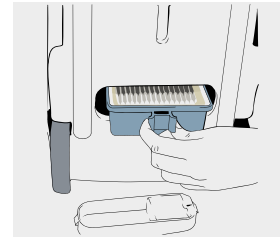
Turn off the device and remove the plug from the electricity supply. Open the lid using the mounted locking button.

Removal / Changing the Dust Bag

Remove the dust container using the paper handle and dispose of it. Insert a new dust bag. If the bag is not inserted correctly, the front panel cannot be closed.

Changing the Swiss HEPA Filter and Active Carbon Filters

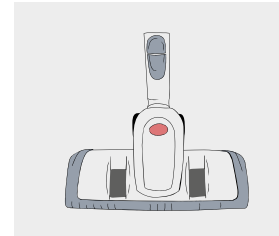
To replace the HEPA H13 filter and the activated carbon filter, set the handle to the HEPA H13 filter, pull the filter out and dispose it. Click the new activated carbon filter into the framework of the new HEPA H13 filter. Insert the filter and ensure that it is in the right position. Turn the handle of the HEPA H13 filter into the correct position and snap it into place.



Changing the Long-Term HEPA Filters

Open the lid on the back of the S115 vacuum cleaner. The HEPA 2 Long-Term filter usually lasts several years before it has to be replaced.

Maintenance of Autocomb nozzle



In order to ensure consistent cleaning services and to preserve the life of the Autocomb nozzle, clean the nozzle regularly.

Remove any hairs and dust particles from the brush ring and the wheels of the nozzle.



Lux International AG

Seestrasse 39

8700 Kuesnacht

Switzerland

E: contact@luxinternational.com

W: www.luxinternational.com